

Towards an integrated approach to Research data management: UCL and Leiden/SURF examples

**James Wilson, UCL
Rory Macneil, Research Space**

**EUDAT 2022
15 September 2022**

Prerequisites to integrated RDM

- **A vision for integration supported by**
 - **Institutional mandate**
 - **Funding**
 - **Organization**
- **Suitable tools that are complementary and interoperable**

NREN support can add value

Electronic lab notebook: From point tool . . .

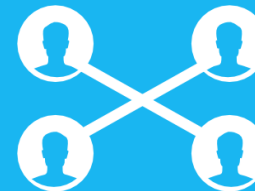
Function

Users/constituents

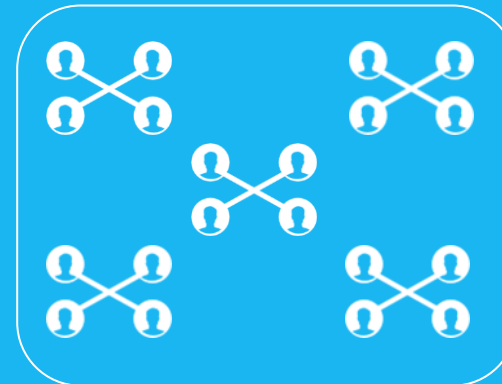
1.1 Replacement for individual lab notebooks



1.2 Collaborative resource for labs



1.3 Fit with institutional research infrastructure



... To Research data management linchpin

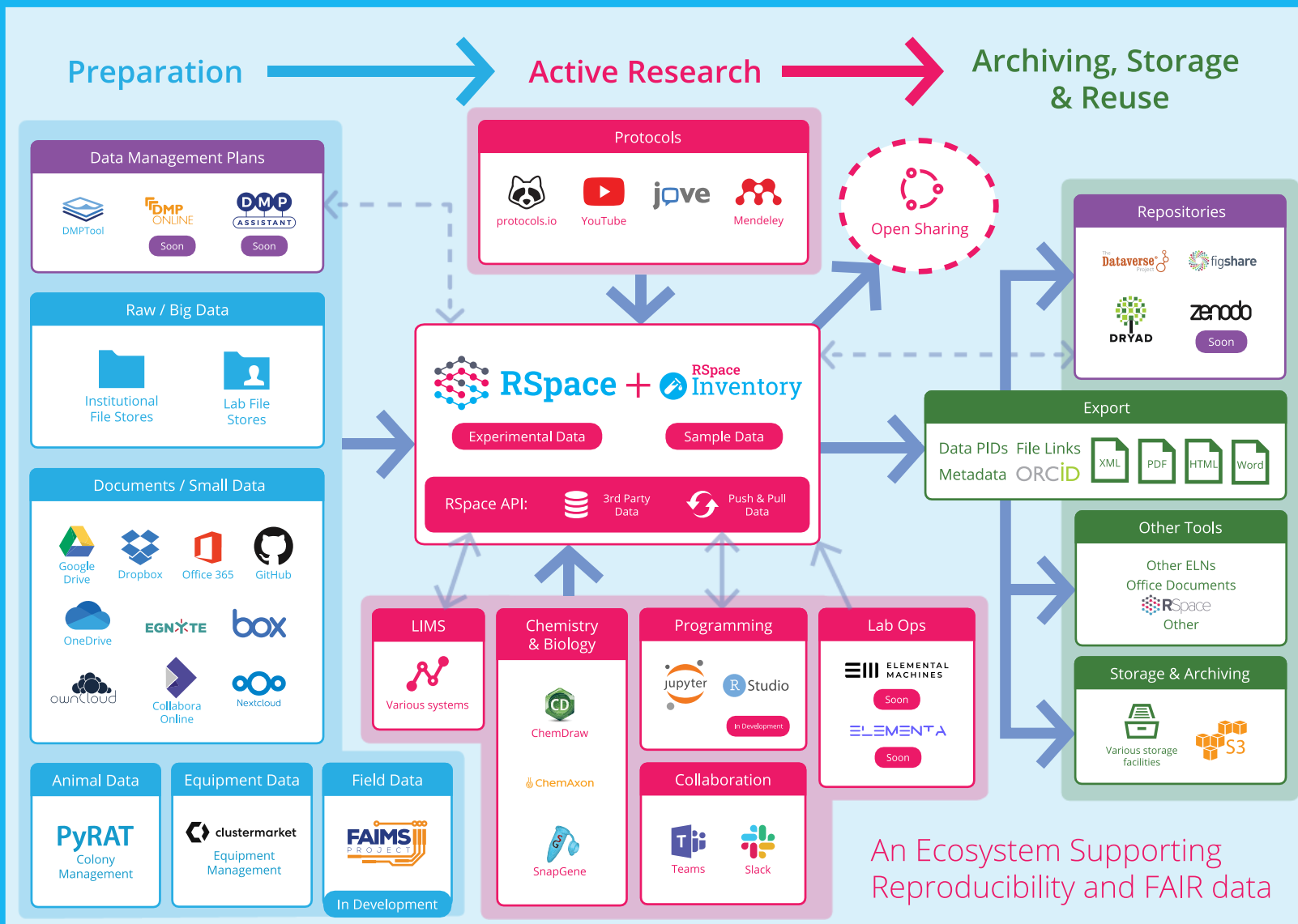
Function

1. Document research projects
2. Enhance reproducibility
3. Streamline research data management and enhance institutional oversight

Users/constituents

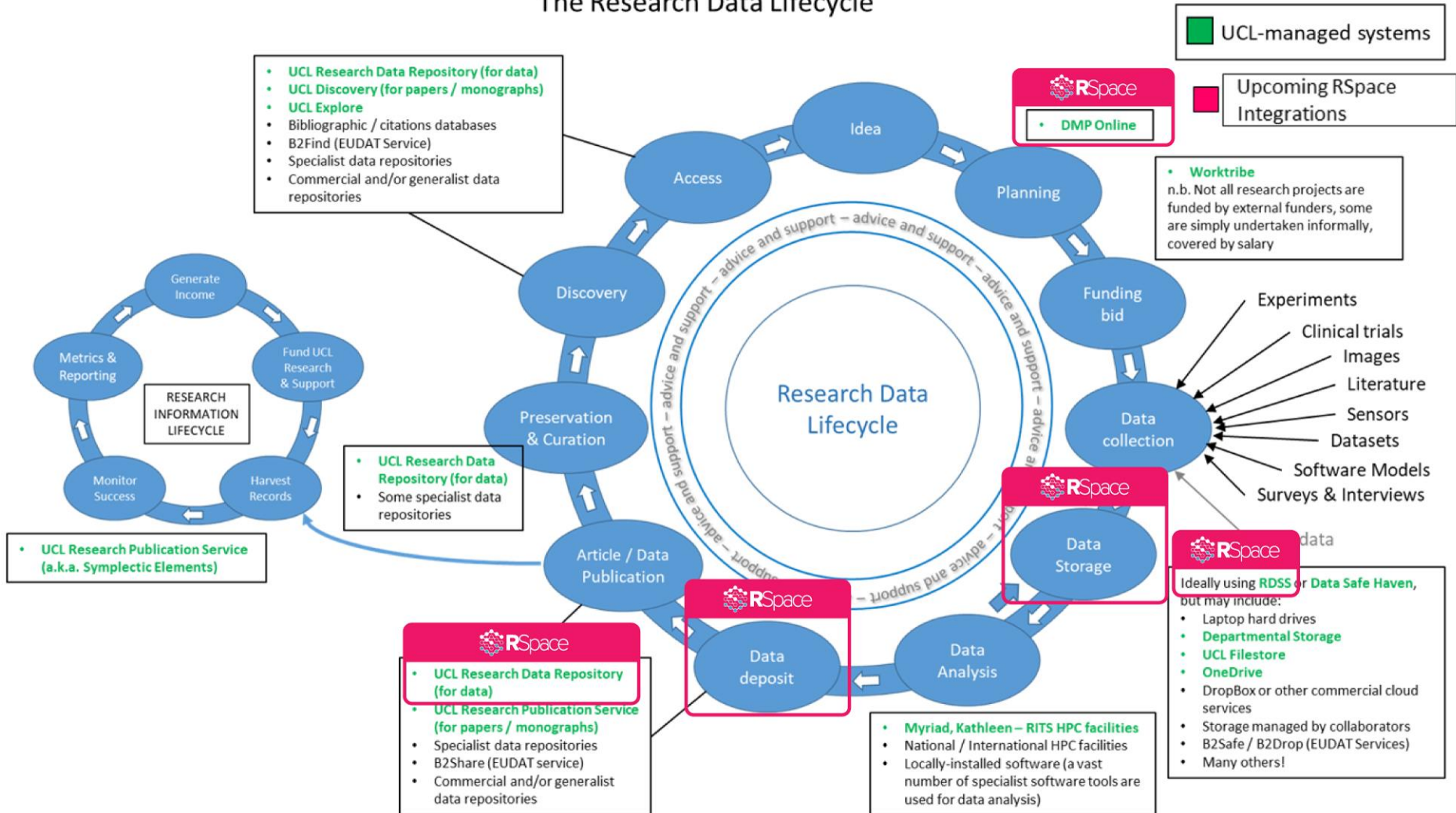
1. Labs
2. Data stewards
3. Institutional research services and research computing leaders

RSpace: An EL/RN designed to integrate into research infrastructure



The ERN vision implemented at UCL

The Research Data Lifecycle



ELN at the core of research data management infrastructure

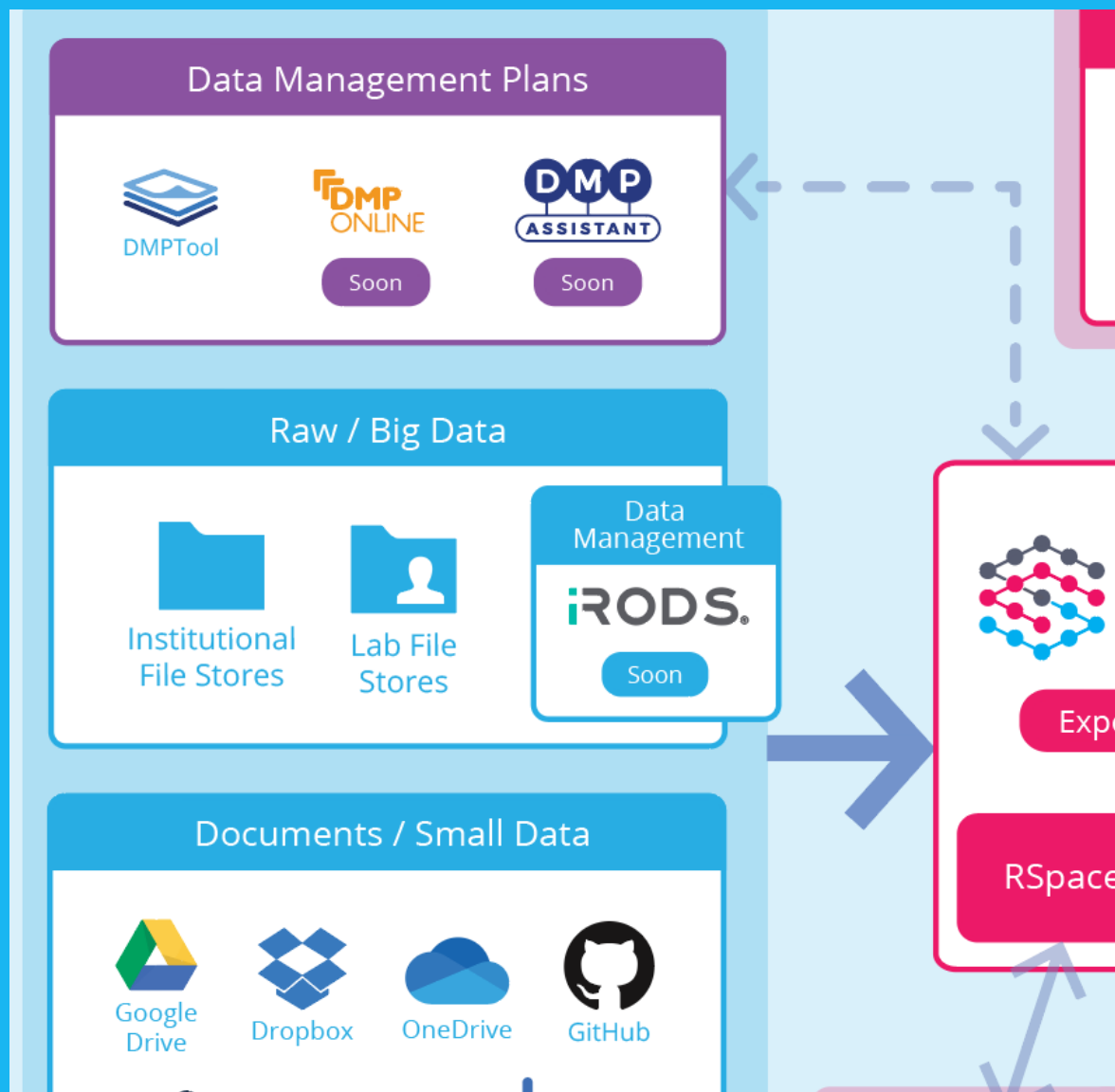
Leiden's 2022 vision

Currently, some research groups work with an ELN implemented in 2016. Other digital solutions and paper journals are also used. Research data is stored digitally on the university network, local hard disks or external storage media.



In the desired situation, all research groups will work with a new ELN, that is linked to external storage and data management solutions. The links between the ELN and the external storage solutions will be designed and set up so as to ensure maximum integrity of the links between the ELN and the external solutions [via integration with the iRODS virtual file management system].

Securing integrity of links between RSpace and files with iRODS



NRENS working with universities to provide integrated research infrastructure

