



B2HANDLE and EUDAT DataCite Consortium

Themis Zamani | GRNET/EUDAT

Merret Buurman | DKRZ /EUDAT

Robert Verkerk | SURF/EUDAT

Kyriakos Gkinis | GRNET/EUDAT



B2HANDLE



eudat.eu



[@eudat_eu](https://twitter.com/eudat_eu)

B2HANDLE is the distributed service for **storing, managing and accessing persistent identifiers (PIDs)** and **essential metadata (PID records)**, as well as **managing PID namespaces**. The implementation of the service relies on the DONA/Handle persistent identifier solution. B2HANDLE can be used by middleware applications, end-user tools and other services to reliably identify data objects over longer timespans and through changes in object location or ownership.

The B2HANDLE service encloses

operations

user support

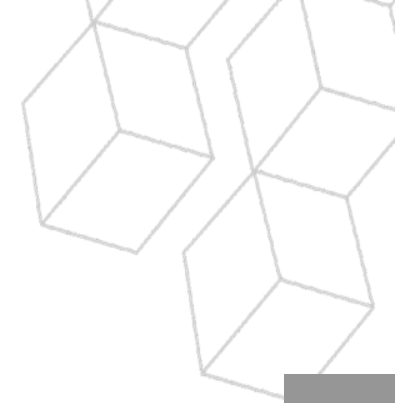
management

documentation

co-development

**establishment
policies**



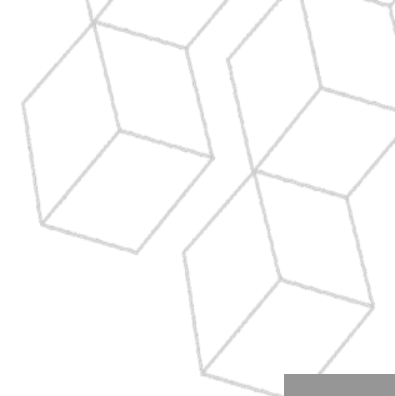


Benefits

Globally resolvable identifiers via the Global Handle Network
(DONA, <https://hdl.handle.net/>)

B2HANDLE operates as a federation of EUDAT service providers
based on policies

PIDs are mirrored across multiple providers for high resolution
and high availability



Benefits

Globally resolvable identifiers in the Global Handle Network (DONA, <https://hdl.handle.net/>)

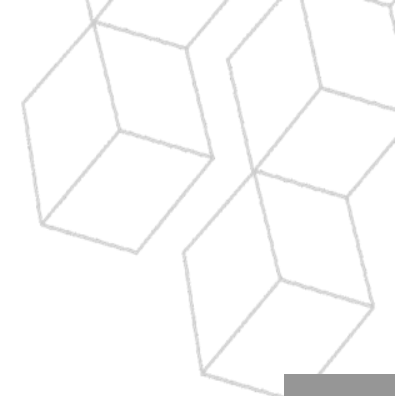
B2HANDLE operates as a federation of EUDAT service providers based on policies

PIDs are mirrored across multiple providers for high resolution and high availability

Communities and organisations can obtain Handle Prefixes (ePIC, 21.) for their own use

PIDs can be hosted at EUDAT service providers

Handle records can be customised to community and organisational needs



Benefits

Globally resolvable identifiers in the Global Handle Network (DONA, <https://hdl.handle.net/>)

B2HANDLE operates as a federation of EUDAT service providers based on policies

PIDs are mirrored across multiple providers for high resolution and high availability

Communities and organisations can obtain Handle Prefixes (ePIC, 21.) for their own use

PIDs can be hosted at EUDAT service providers

Handle records can be customised to community and organisational needs

Support for reverse look-ups of Handle records

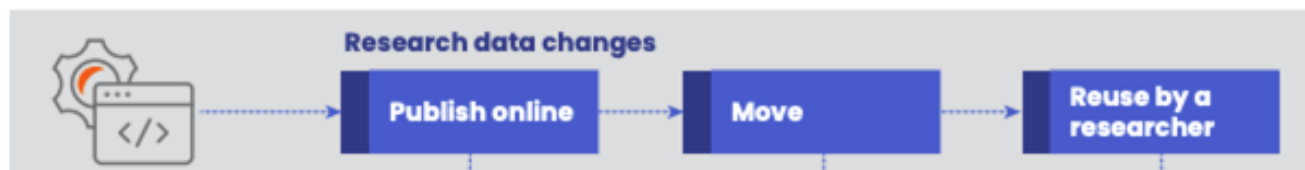
API's , tools , documentation , team support

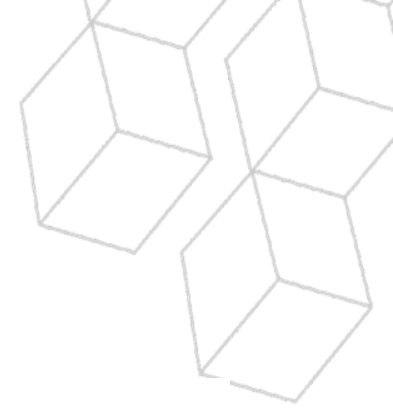
S
E
R
V
I
C
E

S
U
P
P
O
R
T

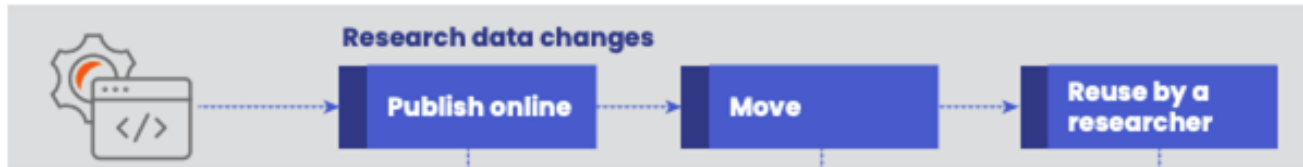
U
S
E
R

The simplest data life cycle



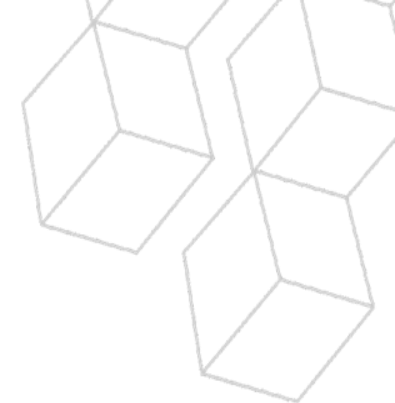


The simplest data life cycle

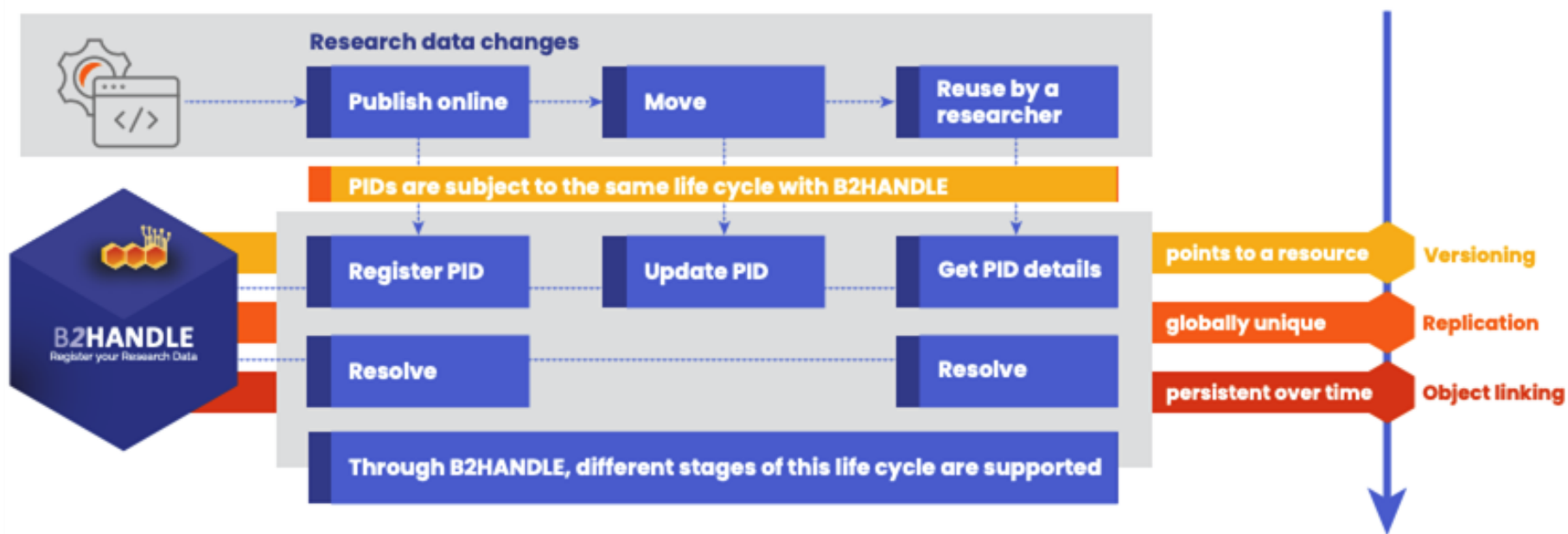


This is when he decides to find a way to make the stored data referenced independently from changes in location.

He decided to obtain PIDs for his data, by integrating B2HANDLE



The simplest data life cycle



Managing data online includes managing the persistent identifier for the data so that it continues to provide information about whatever it identifies—no matter where it is stored online !

B2HANDLE is a service designed to contribute to **data persistency** by maintaining **opaque, globally unique PIDs**. A PID persistent identifier is a long-lasting reference to a digital resource. PIDs are used to **reliably identify** and cite data objects over a long period of time and are thus a vital part of **long-term data management**.

B2HANDLE: What's new

Facilitate common operations on objects

- Create, Copy, Move, Delete
- **Versioning**, replication, **provenance tracking**, object linking



B2HANDLE is a service designed to contribute to **data persistency** by maintaining **opaque, globally unique PIDs**. A PID persistent identifier is a long-lasting reference to a digital resource. PIDs are used to **reliably identify** and cite data objects over a long period of time and are thus a vital part of **long-term data management**.

B2HANDLE: What's new

Facilitate common operations on objects

- Create, Copy, Move, Delete,
- **Versioning**, replication, **provenance tracking**, object linking



Favours simplicity and flexibility

- Technology Agnostic
- **Simple Integration**
- REST API
- **Python library**

B2HANDLE is a service designed to contribute to **data persistency** by maintaining **opaque, globally unique PIDs**. A PID persistent identifier is a long-lasting reference to a digital resource. PIDs are used to **reliably identify** and cite data objects over a long period of time and are thus a vital part of **long-term data management**.

B2HANDLE: What's new

Facilitate common operations on objects

- Create, Copy, Move, Delete, Annotate
- **Versioning**, replication, **provenance tracking**, object linking



Favours simplicity and flexibility

- Technology Agnostic
- **Simple Integration**
- REST API
- **Python library**

Features

- Support for reverse look-ups
- Globally resolvable identifiers
- **Customise to community and organisational needs**
- **Step by step guides**

B2HANDLE is a service designed to contribute to **data persistency** by maintaining **opaque, globally unique PIDs**. A PID persistent identifier is a long-lasting reference to a digital resource. PIDs are used to **reliably identify** and cite data objects over a long period of time and are thus a vital part of **long-term data management**.

B2HANDLE: What's new

Facilitate common operations on objects

- Create, Copy, Move, Delete
- **Versioning**, replication, **provenance tracking**, object linking



Favours simplicity and flexibility

- Technology Agnostic
- **Simple Integration**
- REST API
- **Python library**

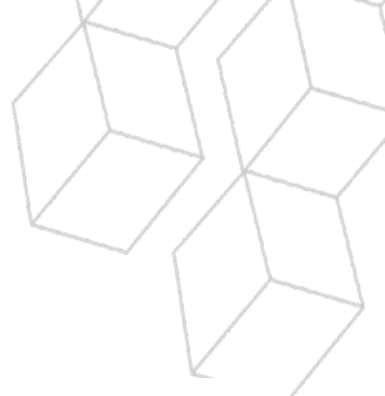
Profiles Development

- **Profile development for clients**
- **Fully aligned with cross-community standards and recommendations**
- **Key concern for FAIR data**

Features

- Support for reverse look-ups
- Globally resolvable identifiers
- **Customise to community and organisational needs**
- **Step by step guides**

B2HANDLE Today

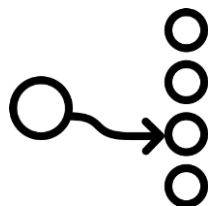


Facts



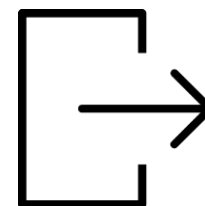
3

Providers



43

Prefixes



>85M

PIDs



Netherlands
 Belgium
 Norway
 Poland
 Finland
 Spain
 Greece
 Italy

Used by



- ☰ Sentinel Data
- ☰ Data Collections
- ☰ Climate Data
- ☰ Seismic data



onboarded



B2HANDLE All resour... ▾ 🔍

My EOSC Marketplace

[Home](#) > [Resources](#) > [Processing & Analysis](#) > [Data Management](#) > [Persistent Identifier](#) > B2HANDLE



B2HANDLE

B2HANDLE

Register your research data with a persistent identifier

Organisation: **EUDAT**

Provided by: **National Infrastructures for Research and Technology, SURF, Gesellschaft für wissenschaftliche Datenverarbeitung mbH Göttingen**

☆☆☆☆☆ (0.0 /5) 0 reviews Add to comparison Add to favourites

Access the resource

📄 VARIOUS ORDER TYPES

- [→ Webpage](#)
- [→ Helpdesk](#)
- [→ Helpdesk e-mail](#)
- [→ Manual](#)
- [→ Training information](#)

[Ask a question about this resource?](#)

ABOUT

DETAILS

REVIEWS (0)

Resolution of PIDs (integrity of the PID infrastructure)

- Transparency about the reliability of the identifiers
- integrity and reliability is achieved by measures taken both on technical & on organizational levels

Content of PIDs and datatypes (integrity of PID metadata)

- Usage of data types and data type registries
- "TypeAPI" service is introduced
 - discover and use PIDs type standards
 - integrity checking of already created PIDs
 - improves the use of data types

Prefixes List

Prefix	#PIC Policy Status	View Prefix
21.11150	●	Details
21.12144	●	Detail
21.12145	●	Detail
21.12146	●	Detail
21.12149	●	Detail
21.12150	●	Detail
21.15107	●	Detail
21.15108	●	Detail

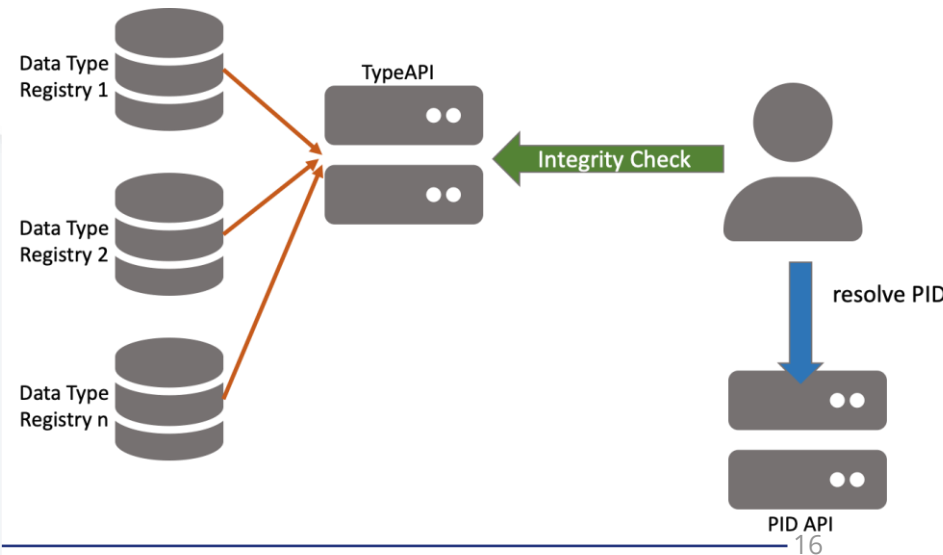
Prefix: 21.12145
Prefix Health Status: OK
Prefix User: EOSC-SYNERGY WP4 LAGO

IP ADDRESSES	SITES	SITE STATUS	PRIMARY SITES	SUBNETS
3	3	●	2	2

IP Address: 134.76.30.199 ...
 Description: mirror of 10916
 Organization: Gesellschaft fuer wissenschaftliche Datenverarbeitung mbH
 Country: Germany

IP Address: 145.100.31.156 ...
 Description: SURFSara master of prefix 10916
 Organization: SURFSara, Science Park Watergraafmeer, Amsterdam
 Country: Netherlands

IP Address: 145.100.31.157 ...
 Description: SURFSara master of prefix 10916 on epdc
 Organization: SURFSara, Science Park Watergraafmeer, Amsterdam
 Country: Netherlands





by end 2023

- Integrity check for PIDs (wip)
- Integration of B2HANDLE(wip) with European platforms and infrastructures
- Integration of B2SAFE, B2SHARE, B2HANDLE and B2FIND (wip)
- Integration of the B2HANDLE service with the DOI handle service offered by DataCite

by end 2023

- B2HANDLE as the main tool of assigning PID to EOSC Portal.



PID policy and implementation TF

- Describe B2HANDLE and main use cases

by end 2025

- An example of the PID Meta Resolver
- Support PID Kernel Information profiles
- First Release PID Compliance Assess Toolkit



1

One place to search the EUDAT PIDs. Re-enable the PID Central Catalogue with new technologies and an easy to use UI/API.

2

Enable PID Graph on central B2HANDLE service. Main services B2SAFE, B2FIND .

3

Always focus on the users. Documentation, ready to use examples, libraries.

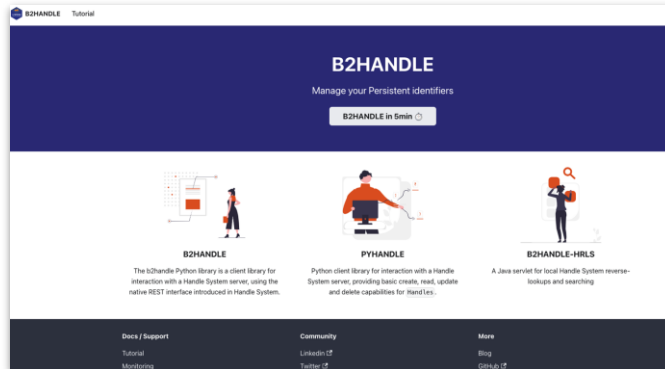
*any other ideas are more
than welcome*

B2HANDLE Documentation



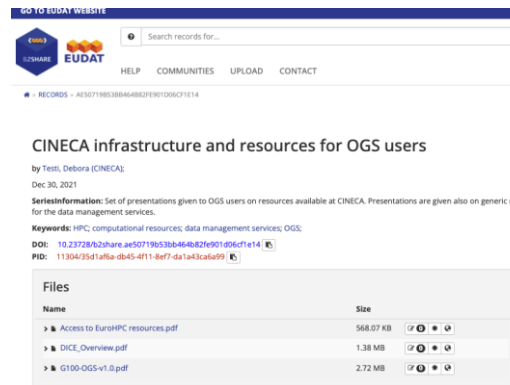
Read about B2HANDLE & devs

<https://eudat-b2handle.github.io/>



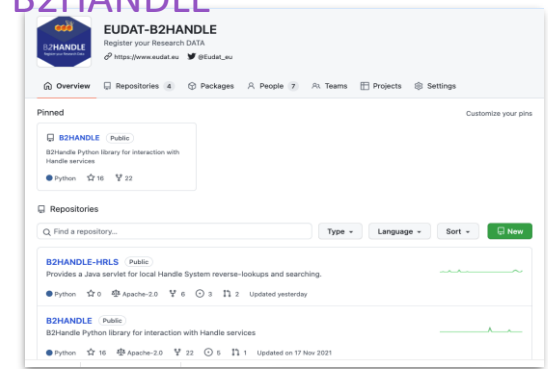
Test B2HANDLE

<https://www.b2share.eu/>



Start using B2HANDLE

<https://github.com/EUDAT-B2HANDLE>



2021



EUDAT as a Consortium Member of DataCite

Using DOIs & making research data FAIR via EUDAT services

Benefits



DOI is a persistent identifier (PID) widely used by the research community and is a key part of ensuring research outputs abide by the FAIR (findable, accessible, interoperable, reusable) Data Principles.

The offering of digital object identifiers (DOI), address a wide range of use cases that needs DOIs.

A global community, learning, collaborating, and advocating with a leading-edge network of research experts

A community developing tools and services that accelerate sharing, use, and reuse of research output

Low Cost & Single contact when providers are running EUDAT services

Membership

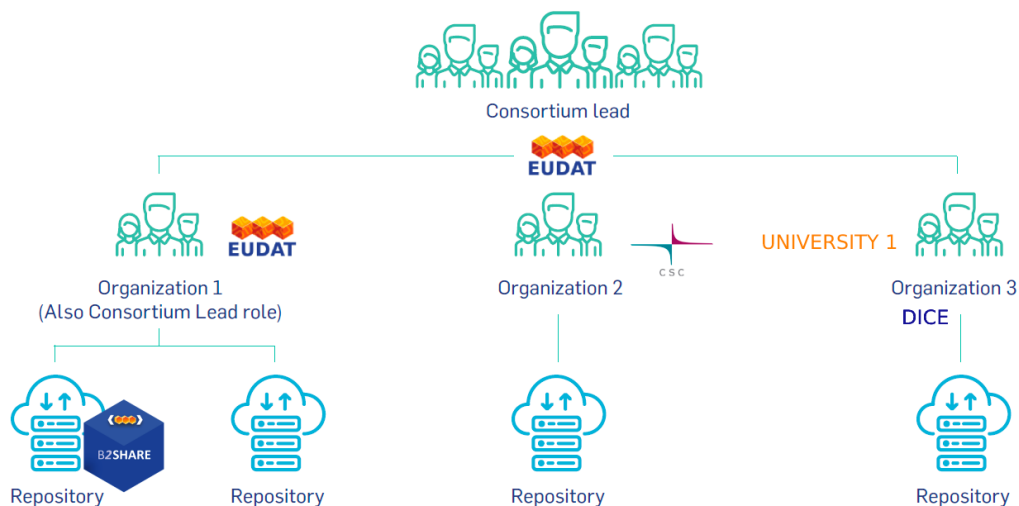


EUDAT CDI members

Organisations affiliated with EUDAT that operate a B2 service or a service based on EUDAT technology

Organizations from Projects / Periodicals from Projects

Research performing organisations within the European Union / EEA





Membership

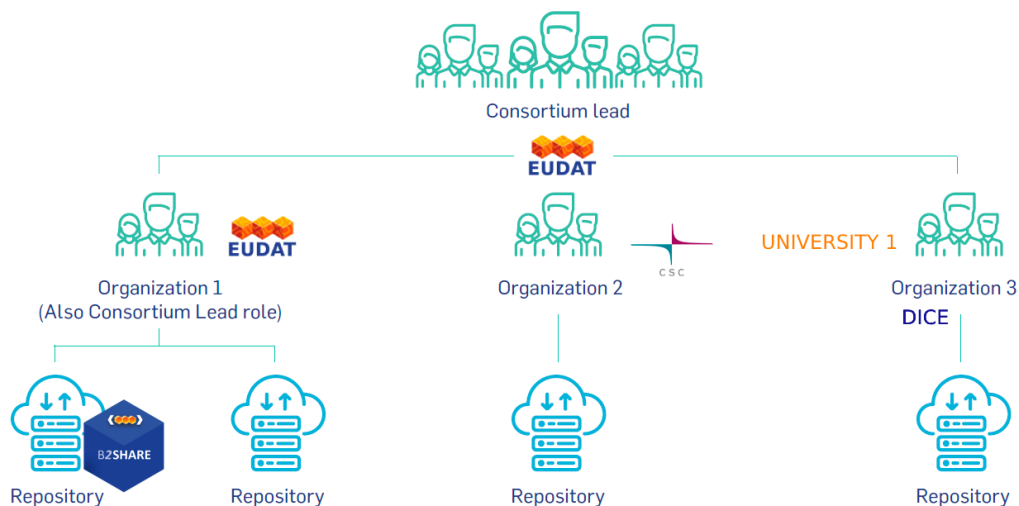


EUDAT CDI members

Organisations affiliated with EUDAT that operate a B2 service or a service based on EUDAT technology

Organizations from Projects / Periodicals from Projects

Research performing organisations within the European Union / EEA



in order to support



Processes



Documentation



datacite@eudat.eu



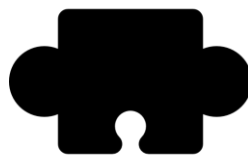
Support Team

Facts



**Consortium
Organizations**

14



Prefixes

18



Repositories

17



DOIs

11,064

Used by



World Spider
Trait Database

ASEP

Institutional
Repository of NTK

Institute of Physics of the Earth, Faculty of
Science, Masaryk University





THANK YOU

Themis Zamani | B2HANDLE owner | GRNET



eudat.eu



[@eudat_eu](https://twitter.com/eudat_eu)